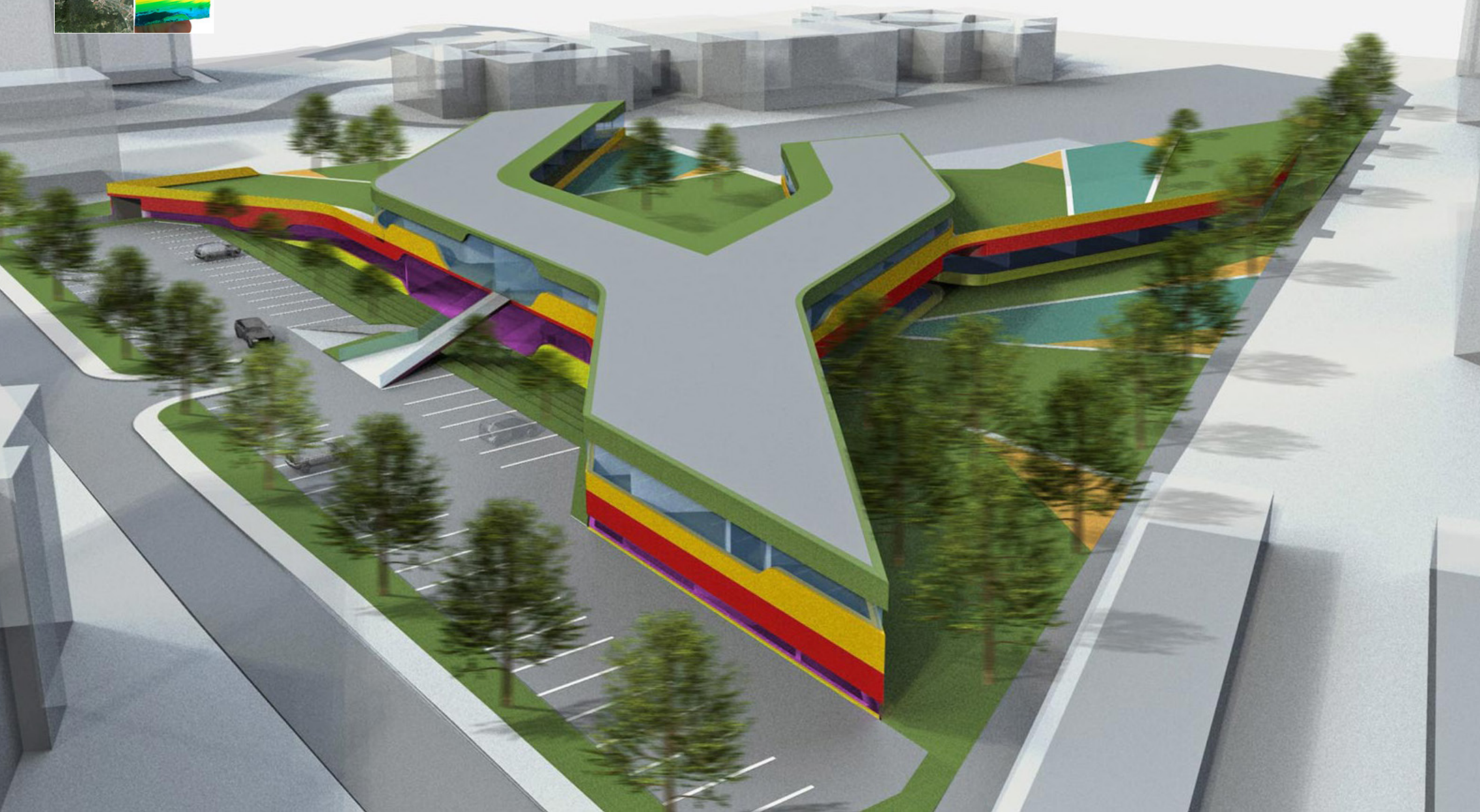
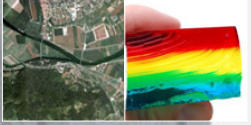
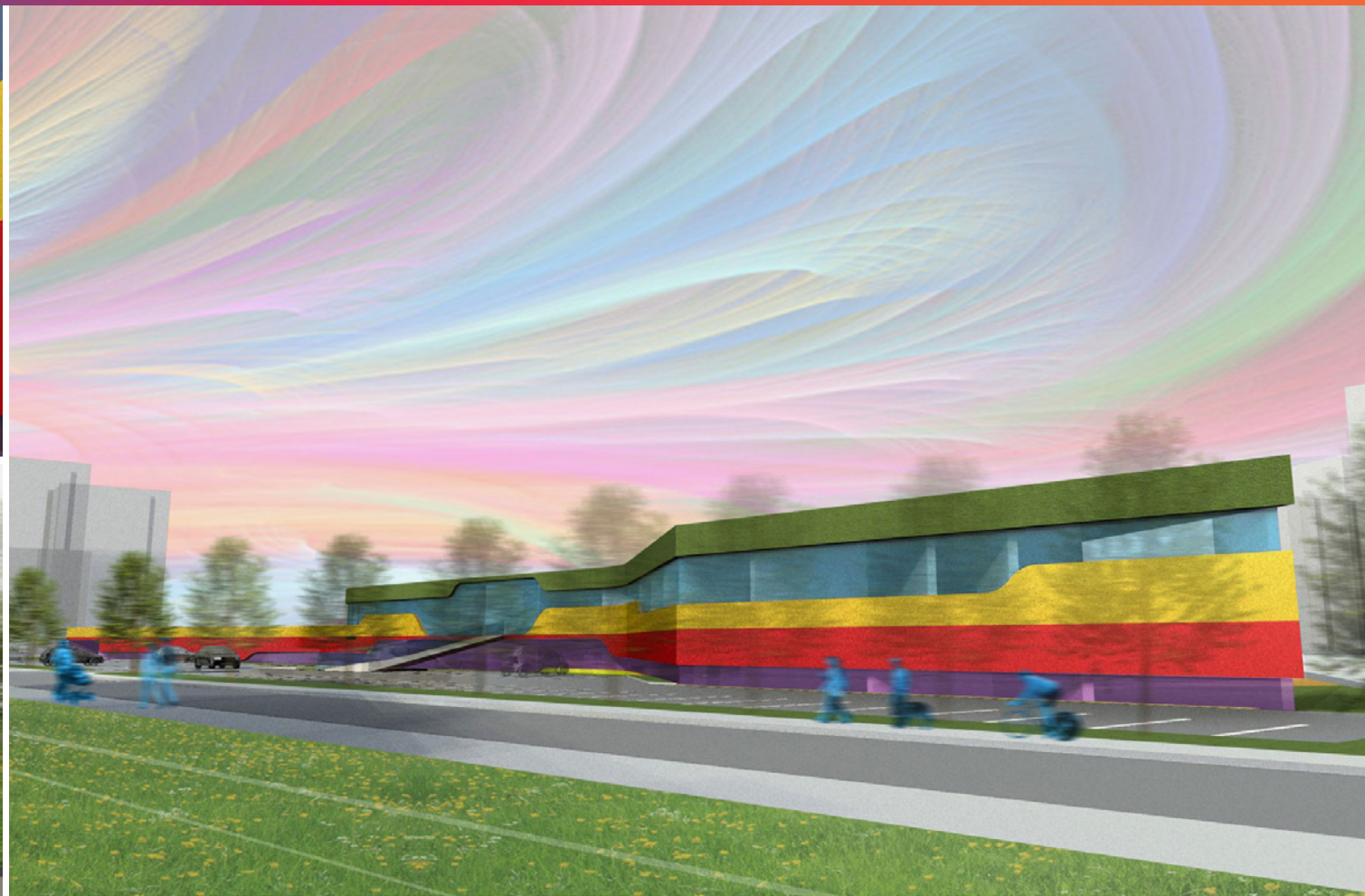
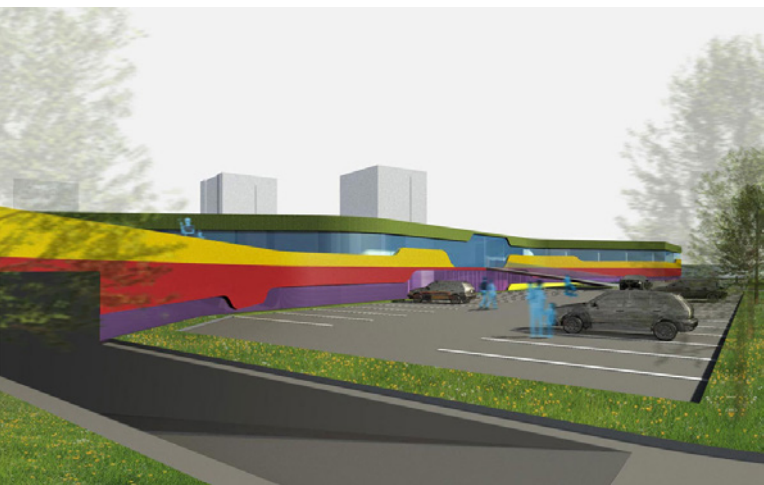
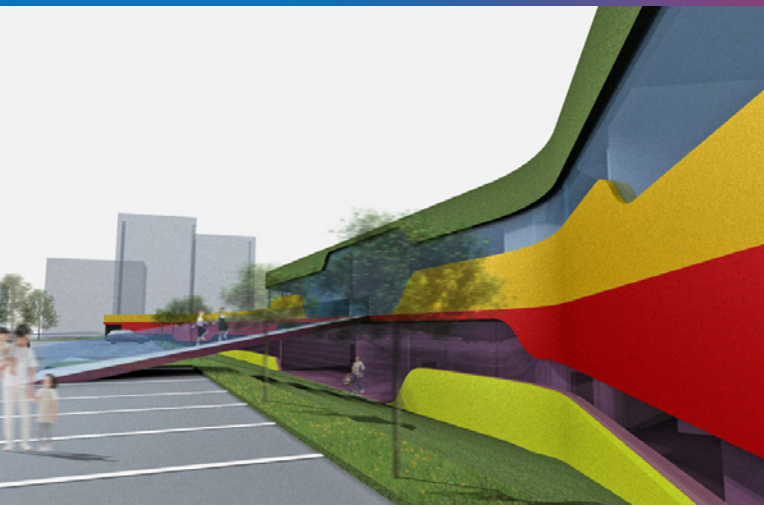


RIVER OF LIFE KINDERGARTEN





The proposed concept is based on the local features of the region, which is characterized by the city of Brežice – the confluence of the rivers Sava and Krka. The kindergarten is flowing into the green space as the river delta. The flows of the kindergarten create atriums, which open up to the greenery and offer optimal conditions for insolation. The principle of flowing is used on segmenting the facade longitudinally as well. The strips of the facade are flowing like a rainbow on a green meadow. The result is a unique segmentation and stretching of the kindergarten in the space.

Code name:
Program:
Type:
Year:
Client:
Location:
Area:
Architects:

The river of life
Kindergarten
Public competition
2011
County of Brežice
Brežice, Slovenia
3876 m²
Superform;
Marjan Pobljšaj,
Anton Žižek, Meta Žebre