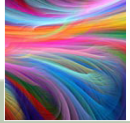
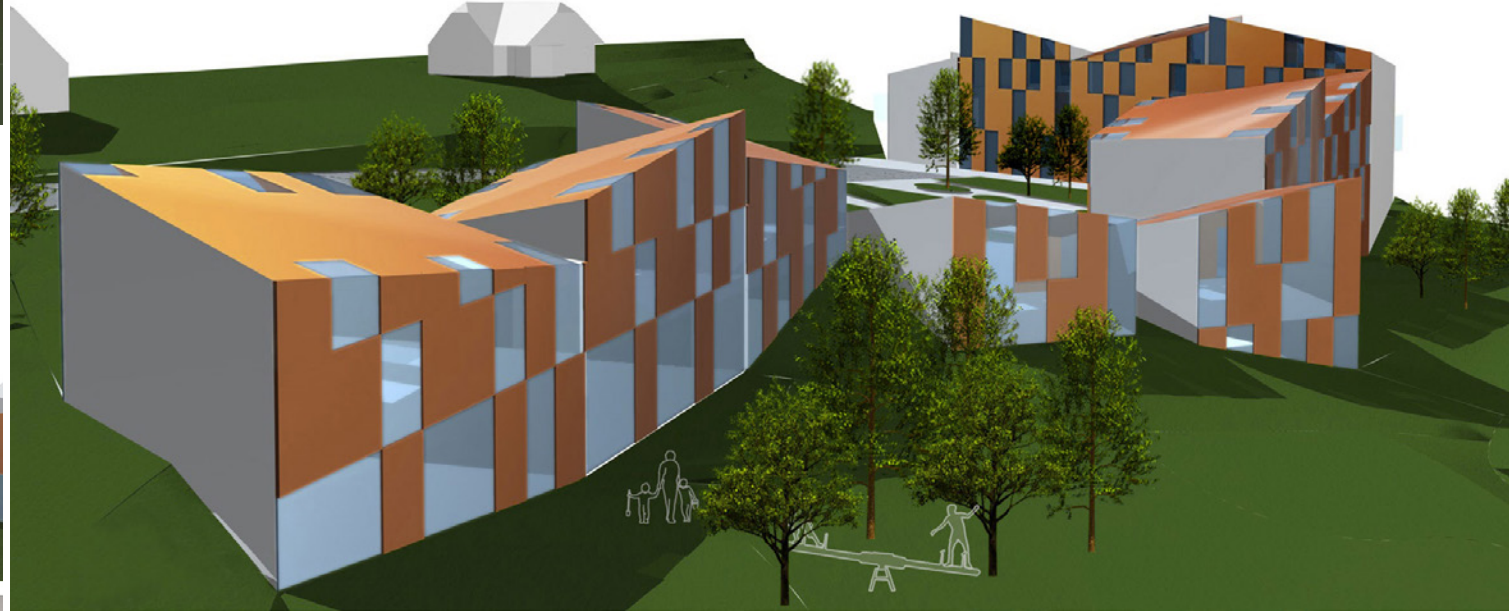
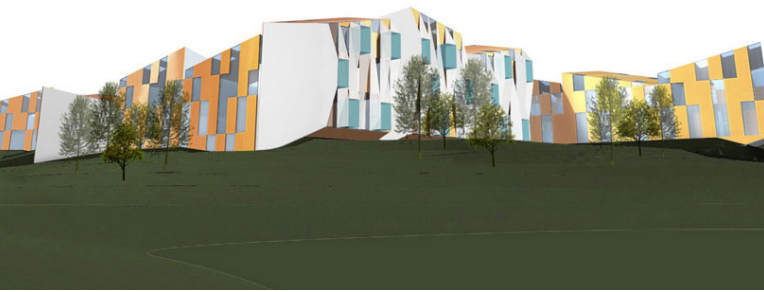


# PRINTS OF RAINBOW

KINDERGARTEN, CLINIC, NURSING HOME, 2010





The building is divided into five program components. These are arranged longitudinally along the virtual backbone: alternately turning towards the valley and the hill; dependently on the function of the program, set out the need to view or illumination. Each component is broken down to 2-3 smaller units. Floors facility does not exceed 3 floors. The building is thus closer to the scale of dwelling construction.

The backbone follows the topography of the terrain (contour lines). In this way the facility is naturally placed in the space. With the detail of the vertical plane and alternately turning the roof planes on each column, we achieve an approximation to the existing model of building on the town's silhouette level.

Code name:	<b>Prints of the Rainbow</b>
Program	Kindergarten, Clinic, Nursing home, 2010
Type:	Commission
Year:	2010
Status:	Idea
Client:	Private
Location:	Planina pri Sevnici, Slovenia
Area:	2.500 m <sup>2</sup>
Architects:	Superform: Marjan Pobjljšaj, Anton Žižek, Meta Žebre