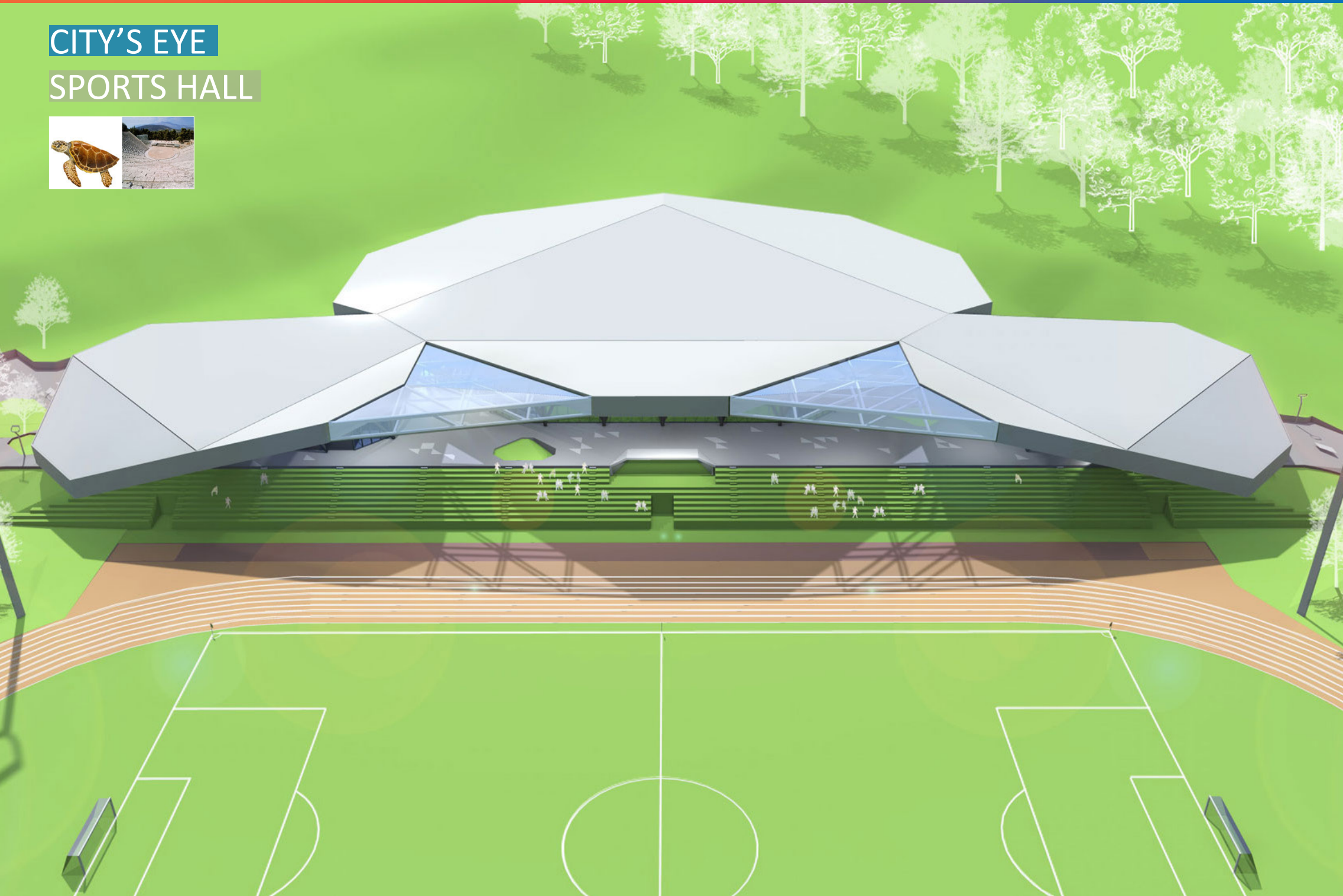
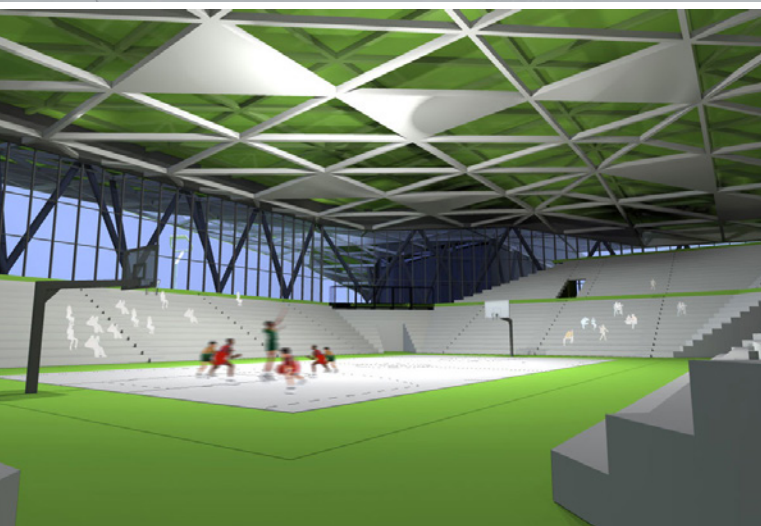
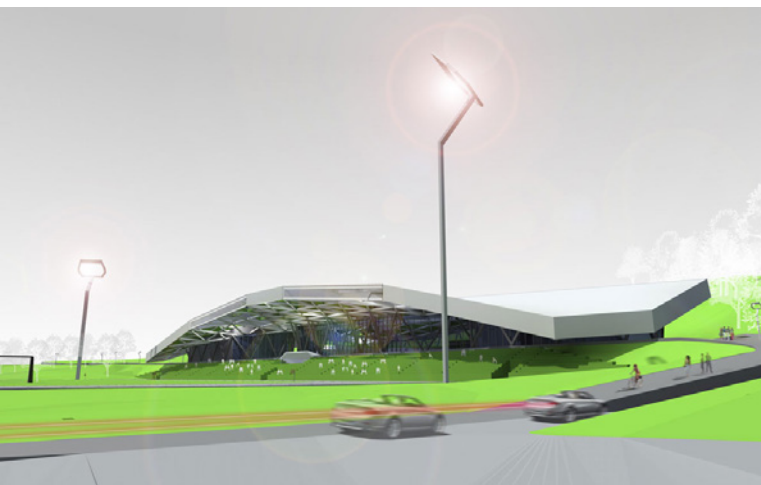


CITY'S EYE SPORTS HALL





The fundamental design elements are derived from the natural characteristics of the space, the needs of the city and the needs of the users:

BOWL, GREEK THEATRE

The hall becomes a city theatre. The platform between the hall and the stadium becomes a city platform, a square for staging events offering a unique vista of the city.

TORTOISESHELL

The roof covering the hall complex is folded on its edges and thus creates a tortoiseshell form. The roof is analogous to the hill into which it is embedded.

The new sports hall is the city's eye.

Code name:

Program

Type:

Year:

Client:

Location:

Area:

Architects:

City's eye

Portoval Sports Hall

Open anonymous competition

2011

County of Novo mesto

Novo mesto, Slovenia

25 000 m²

Superform: Marjan Pobljšaj,
Anton Žižek, Meta Žebre, Špela
Jančar, Maša Cotič