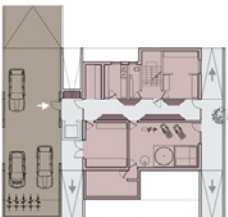
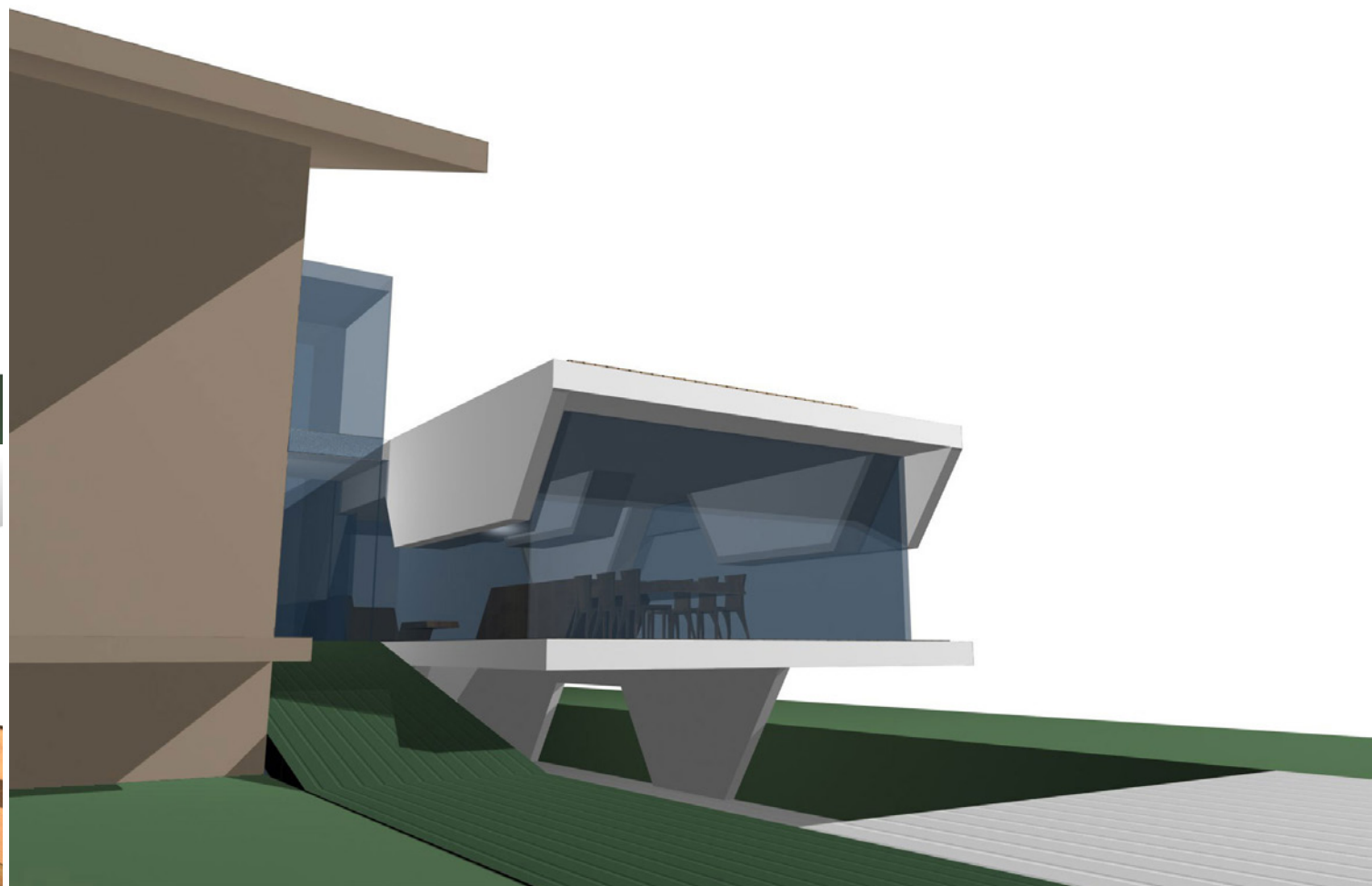
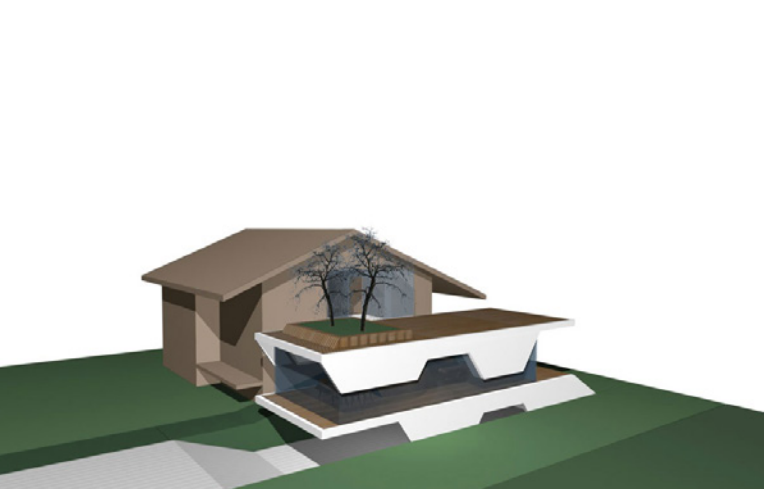


BETWEEN EARTH AND SKY

FAMILY HOUSE EXTENSION





Based on the original condition and the architecture of the existing house, which feels closed and heavy, we wished to create a light and opened space. The slabs of the house “eat” the columns, interior and fixed curtains; as such they become dynamic “fat” slabs. Inside these create a feeling of connection between the Earth and the Sky. We moved the construction away from the existing one and created a new representative entrance. The level of the living are was lifted to the level of a high ground floor and gained a roofed parking lot for cars. The level of the roof becomes a terrace for a family in the attic.

Code name:	Between earth and sky
Program	Family house extension
Type:	Commission
Year:	2008
Client:	Private
Location:	Ljubljana, Slovenija
Area:	65 m2
Architects:	Superform; Marjan Pobljšaj, Anton Žižek, Meta Žebre