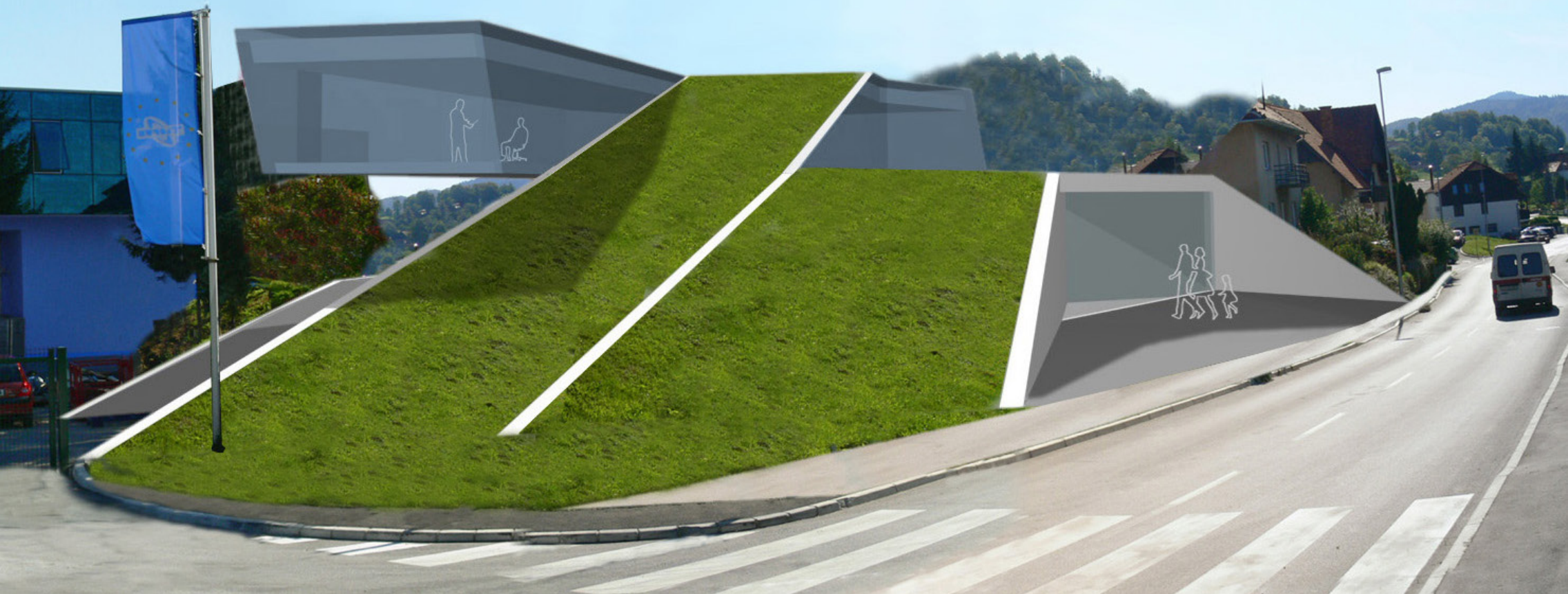
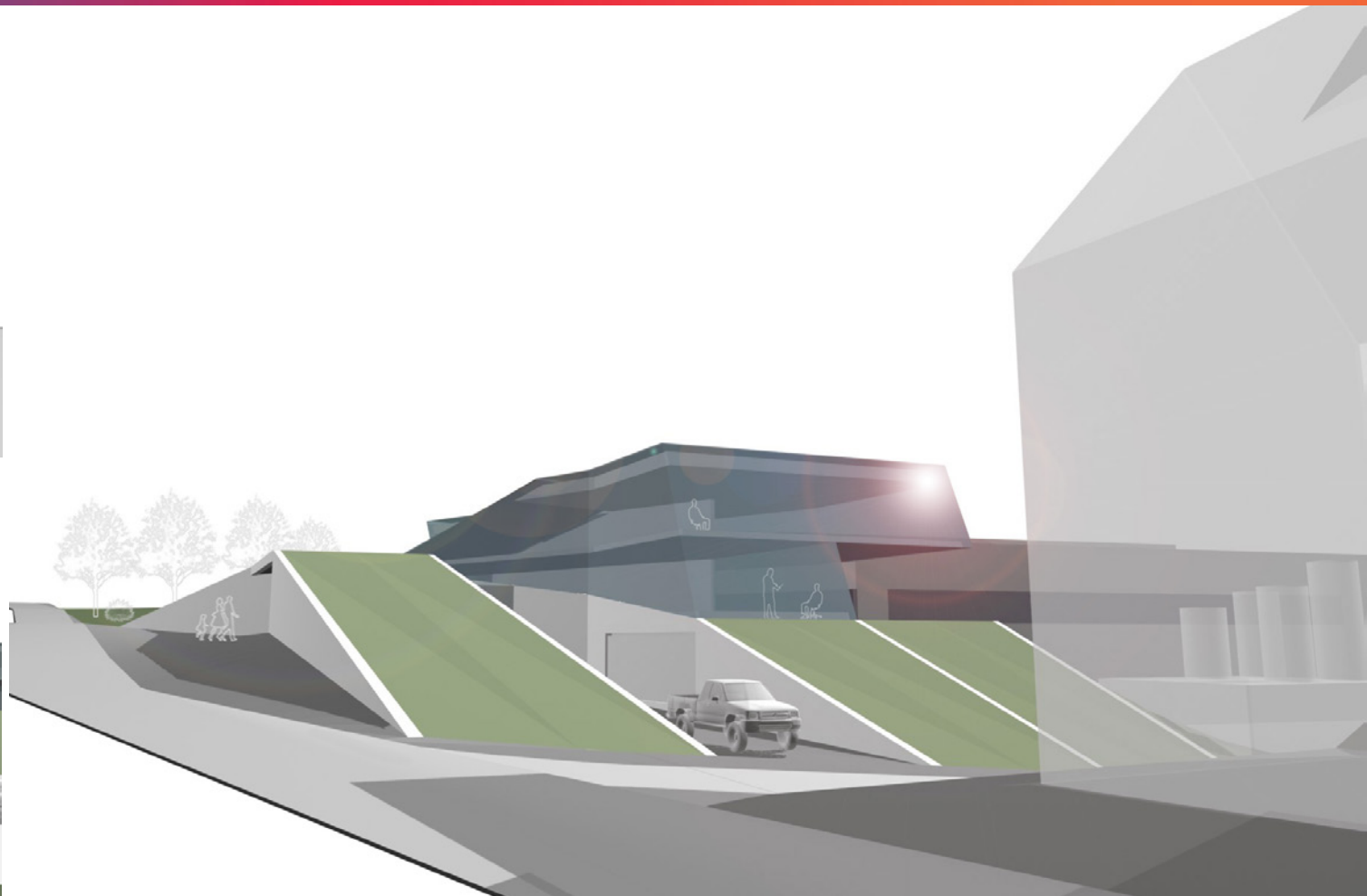
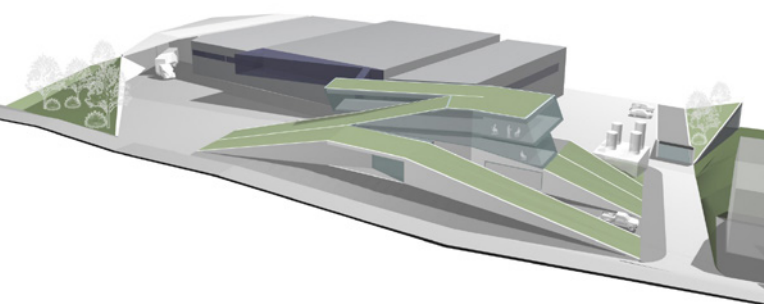
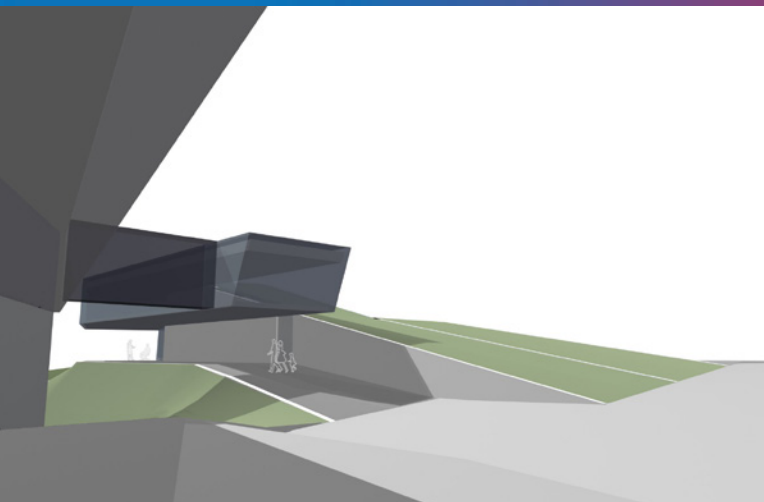


# START, MOTION, CREASE INDUSTRIAL COMPLEX





The principle of designing the three structures was to connect them into one structure of a similar character and create a green ring around the factory. The ring with its creasing creates structures above and under ground. In the microlocaton, we surround the production facilities with greenery and lift the quality of the space, while on a much larger scale we soften the rugged appearance in the petit structure of the location itself.

Code name:	<b>Start, motion, crease</b>
Program:	Industrial complex
Type:	Commission
Year:	2007
Client:	Private
Location:	Planina pri Sevnici, Slovenia
Area:	2355 m <sup>2</sup>
Architects:	Superform; Marjan Pobjljšaj, Anton Žižek, Meta Žebre, Tamara Rijavec
Landscape design:	Matej Kučina (Bruto)