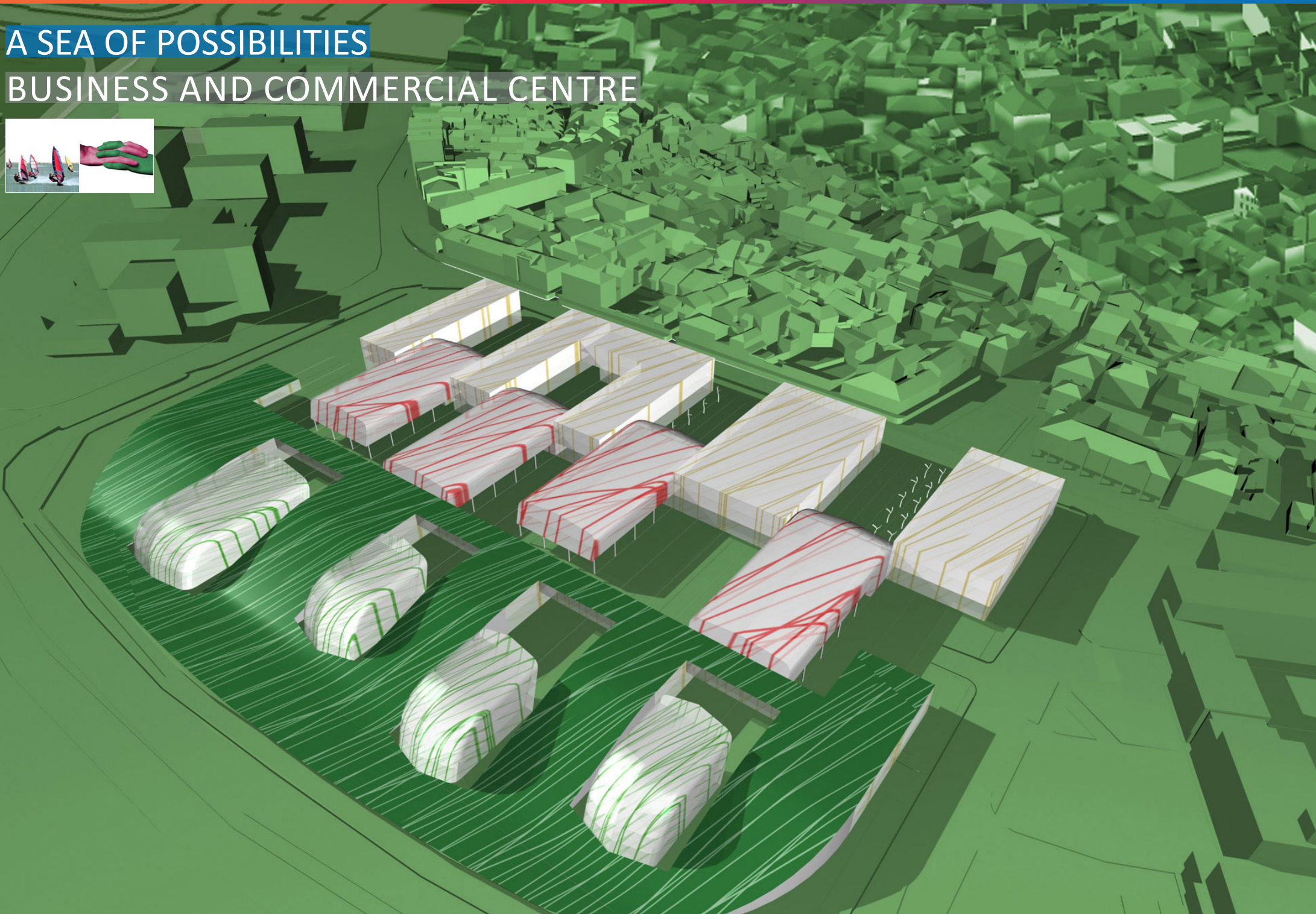
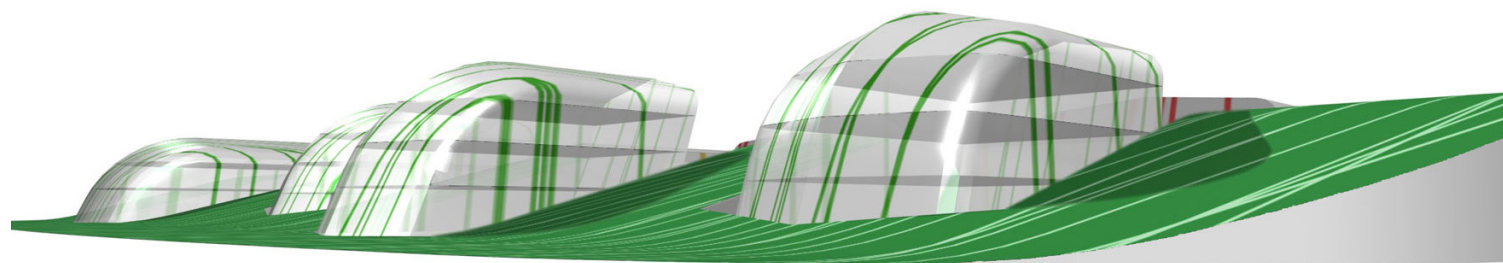
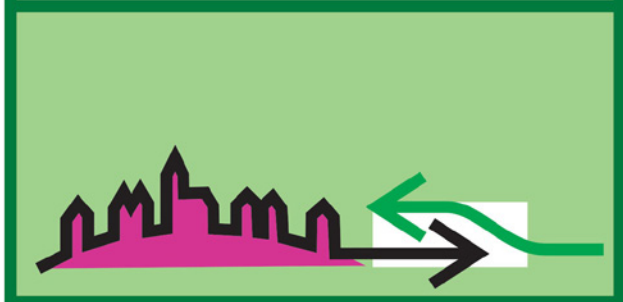
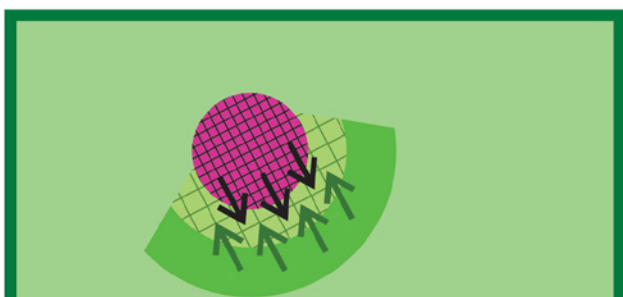
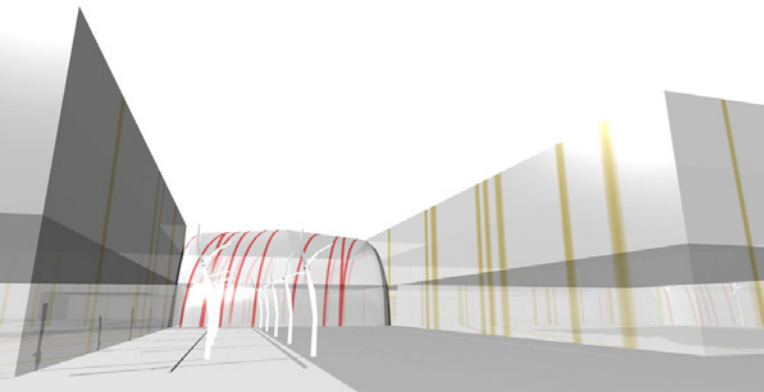


A SEA OF POSSIBILITIES BUSINESS AND COMMERCIAL CENTRE





The built environment and the empty green space intertwine in the direction north – south, in the direction of the water movement (waves), much like two hands interlace their fingers. The greenery moves in from the south, from the outskirts, the built environment from the north, from the old town. Three new half open spaces form at Vojkovo embankment: the first one at the end of Soška Street (Commerce Square), the other two at the end of Kosovel Square (Golden Square and Lavandl Square). Lion's course goes through the center of the built environment in the direction east – west.

Code name:
Program:
Type:
Year:
Client:
Location:
Area:
Architects:

A sea of possibilities
Business and commercial centre
Public Competition
2003
County of Koper
Koper, Slovenia
20865 m²
Superform; Marjan Poboljšaj,
Anton Žižek